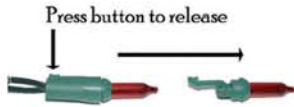


# Lighted Tree Information Sheet



## Tips on care and maintenance of your lighted artificial tree:

- As soon as you notice a bulb has burned out, replace it. This will extend the overall life of the light set. Many spare bulbs have been included with your tree. They may be found in small plastic bags attached to each light set where it plugs into the extension cord on the trunk. (We recommend leaving them intact so they are easily available for replacement.)
- Don't put your tree away hot! Allow the lights to settle and rest for at least 30 minutes. This will protect them from cracking and breaking.
- Store your tree in a dry and cool place.



Patented lamp lock  
Twist proof bulbs rated to  
last 3,000 hours

4 year warranty on the lights,  
10 year warranty on the tree  
See enclosed warranty card for  
details or contact us at:

One E. Superior Street  
Chicago, IL. 60611  
(866)865-TREE

NeumanTree, Inc. has designed an easy way to store your tree! Our Artificial Christmas Tree Storage Bag has been meticulously designed to make taking down and setting up your tree a snap! If you are interested in purchasing our bag, please contact us for a specialty retailer who carries this item. Accept No Substitution!



Patent No. DES. 411,918



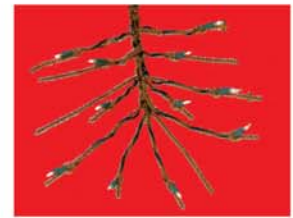
Quality isn't Expensive...  
It's Priceless!



Each needle has its own light.  
No unsightly wires dangle from tip to tip.

Q  
U  
A  
L  
I  
T  
Y

BRILLIANT!  
Integrated Lighting  
System



All 50 light sets are more expensive to produce and much less likely to fail.

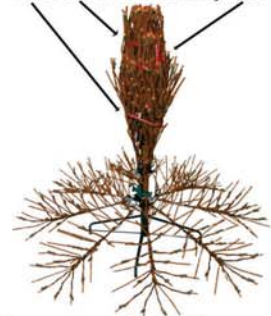
Light cords are attached to the needles with miniature tips.



They hide the wire and protect the needles from crushing.

R  
E  
V  
E  
A  
L  
E  
D

Each row is individually tied.



Customer friendly set up!  
Shape one row at a time.